

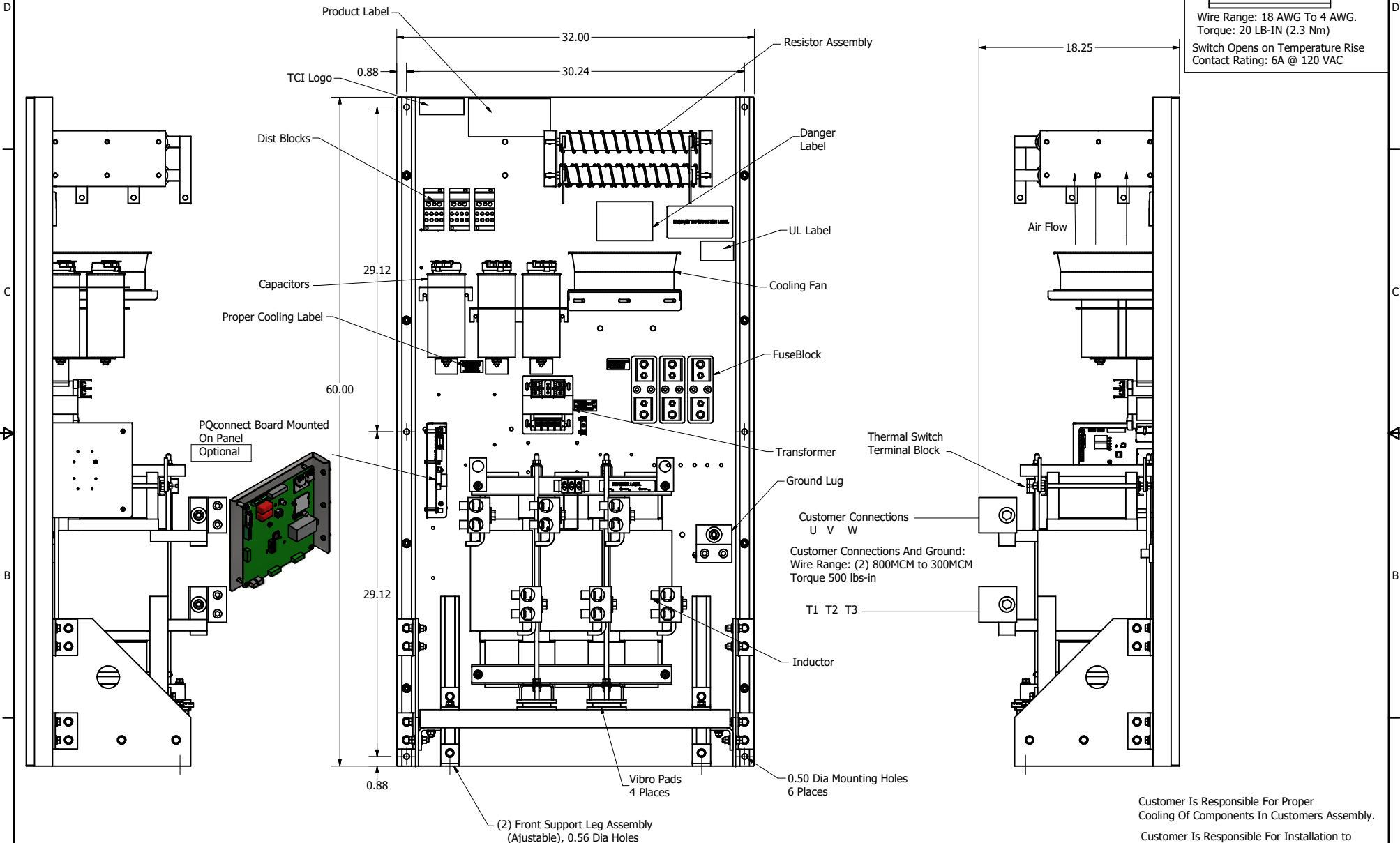
SineWave Part Number	Schematic Drawing#	Approx Weight (LBS)
KMG750A00A	24281-3A	760
KMG750A00P	24281-3P	765

HorsePower (HP)	kVar	Max Amps	Voltage (V)	HZ	Phase
600	50	750	480	60	3

1

Thermal Switch Terminal Block

Wire Range: 18 AWG To 4 AWG.  
Torque: 20 LB-IN (2.3 Nm)  
Switch Opens on Temperature Rise  
Contact Rating: 6A @ 120 VAC



Customer Is Responsible For Proper Cooling Of Components In Customers Assembly.

Customer Is Responsible For Installation to Meet All National And Local Electrical Codes.

Material(s) Shall be RoHS Compliant

TCI, LLC CLAIMS PROPRIETARY RIGHTS IN THE MATERIAL HEREIN DISCLOSED. IT IS SUPPLIED WITHOUT PREJUDICE TO ANY PATENT RIGHTS OF TCI AND MAY NOT BE REPRODUCED OR USED TO MANUFACTURE ANYTHING SHOWN THEREIN WITHOUT WRITTEN PERMISSION FROM TCI.					TOLERANCES (EXCEPT AS NOTED) DECIMAL .XX ± .25 .XXX ± .10	W132 N10611 Grant Drive Germantown, WI 53022  KMG750A000- SineWave Filter Open Panel, 600HP, 480V	
					FRACTIONAL ± 1/16		
	B	Add PQconnect Board	9/14/2020	DSW			DRN BY: DSW DATE: 10/05/2014 SCALE: 1/5 FILE: 104346DG
	NO	REVISION	DATE	BY			TOL: ± 1° SHEET 1 OF 1